



1005 Cole Road
71.7± acres | Mercer County
\$599,950

Offered Exclusively By:

KIRKPATRICK & CO.

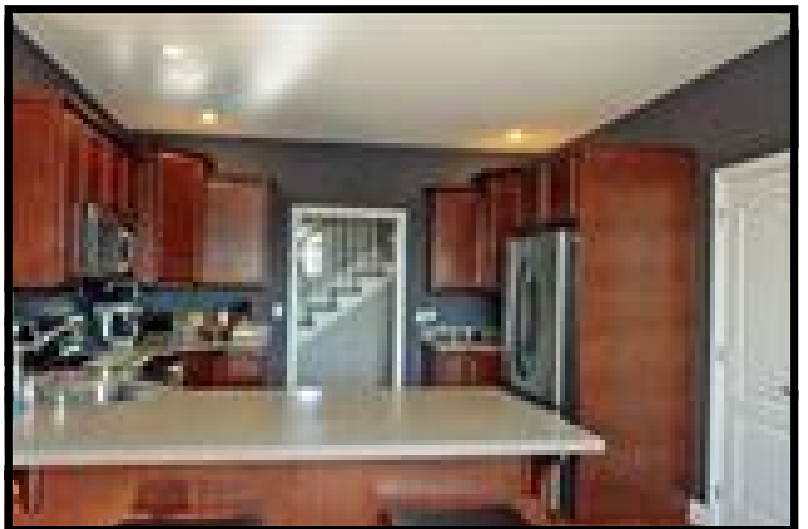
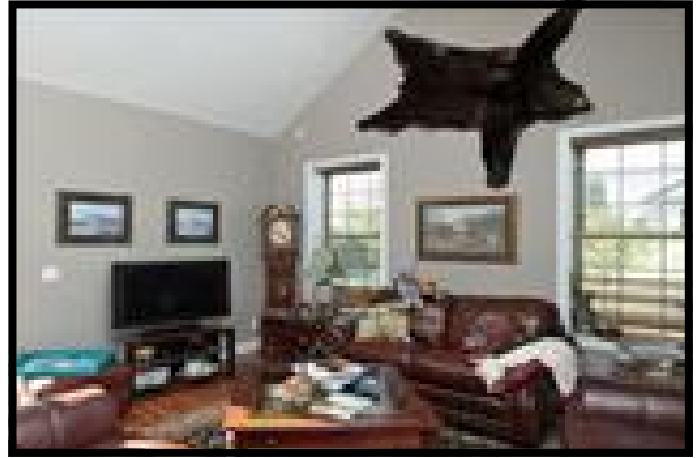
Cathy S. Davis | Agent
+1 .859.806.9444
www.kirkfarms.com
farmgirl@iglou.com

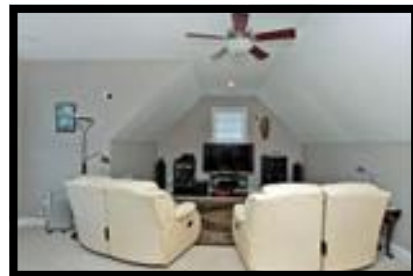
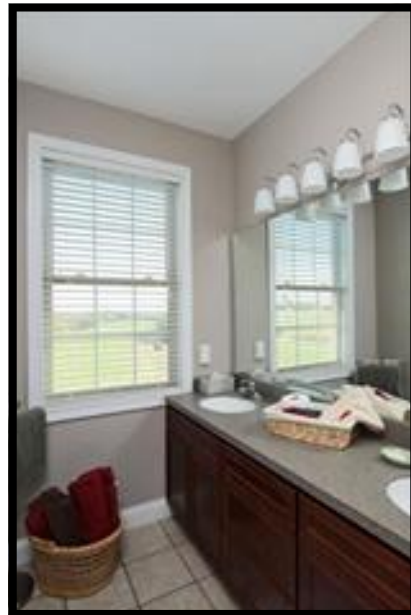




Sitting along the Salt River just 5 miles from the Bluegrass Parkway, this charming farm has a lovely home that rests on top of a knoll offering beautiful 360-degree views! The home features 3 bedrooms, 2-1/2 baths, large bonus room on 2nd level, a roughed-in walk-out basement, and a nice deck off the master at the rear of the house for entertaining. The property also has a 60 x 100 metal barn with 5 stalls (with room for 2 more), tack room and wash stall, an older wooden barn for storage, a unique silo and prime Maury soil with flat fields.

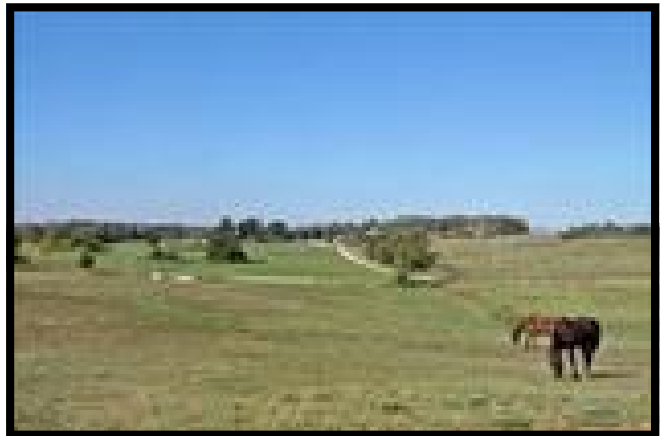
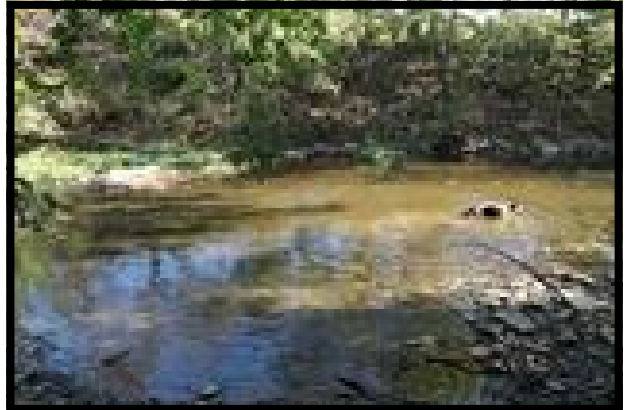








All of the information contained herein is deemed reliable but is not warranted; all figures, facts and boundaries are believed to be accurate but independent verification is strongly advised. Square footage measurements & school district information is believed to be accurate but independent verification is strongly advised. The listing broker or broker associates recommend interested parties, prior to closing, perform a complete property inspection (including but not limited to environmental assessments and percolation tests as may be necessary for BUYER'S intended use of the property) have the land surveyed by a licensed surveyor, the title searched and inspected by an attorney and any and all legal questions or concerns directed to legal counsel. The broker or broker associates will not advise on matters outside the scope of their real estate license.





Property boundaries are only approximations and do not represent actual property lines. This is for illustration purposes only.